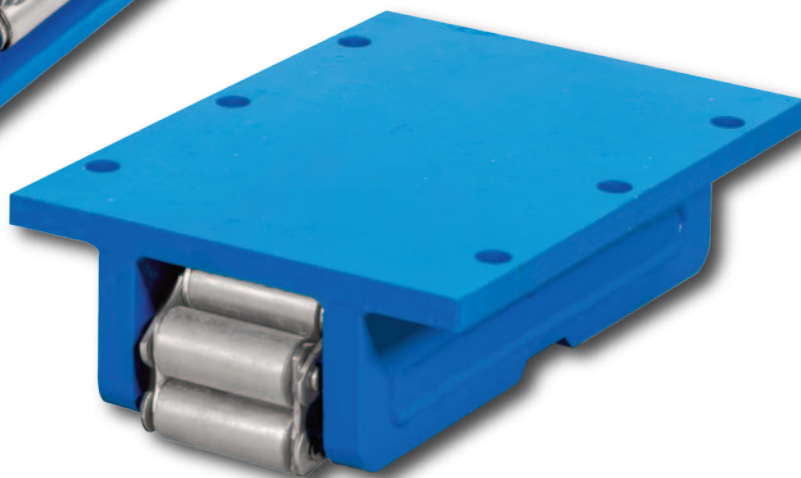
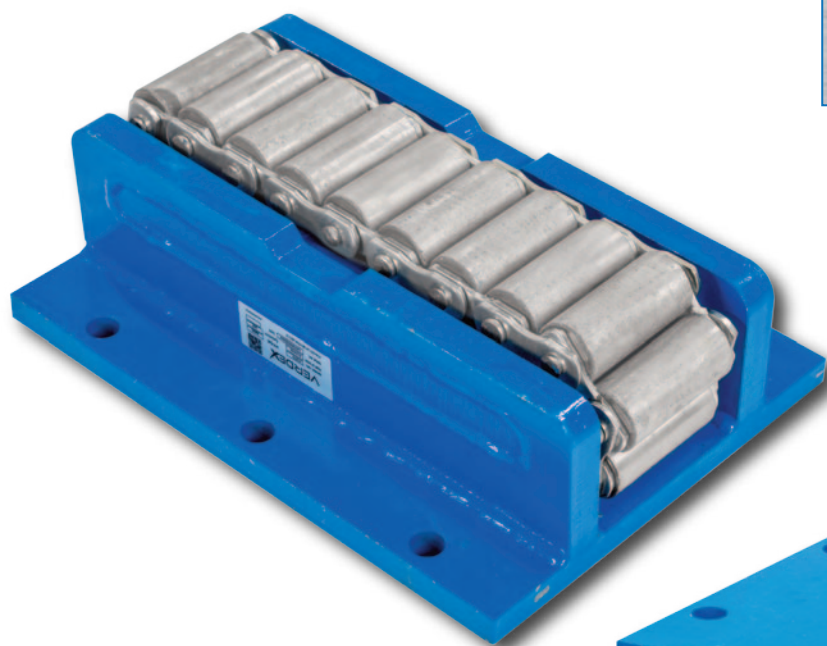


Equipment Roller Load Skate 50 Tonne Capacity

The Equipment Roller Load Skate – 50,000kg is a versatile solution built for demanding industrial applications, making it a smart choice for repetitive motion or integration into larger equipment. Its design enables smooth, controlled movement of heavy loads in any direction. Ideal for manufacturing lines, machinery assembly, and maintenance operations where strength and reliability are essential.

- Ideal for linear motion, repetitive movements or use as a built-in component in equipment.
- Heavy duty robust rollers built for long life.
- Rollers have a fixed hole pattern for bolt-mounting.
- Can be used right side up, inverted, or on their side.



Code	Capacity (kg)	Size of Roller LxW (mm)	No. of Rollers (pcs)	Overall Dimensions LxWxH (mm)	Unit Weight (kg)
V1370	50,000	89x41	29	417x305x140	68