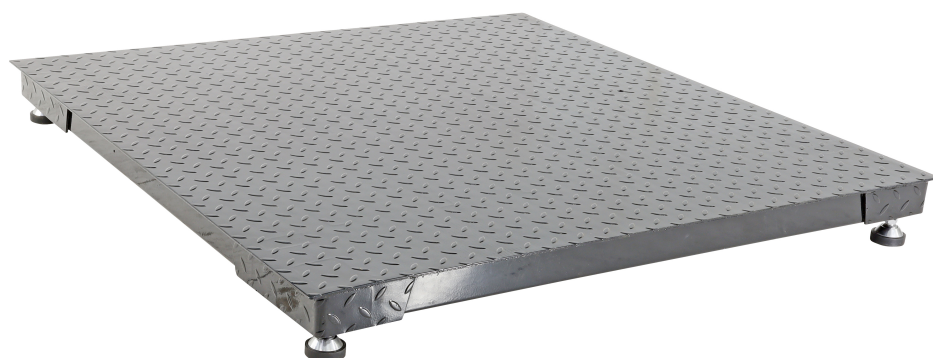


## Floor Pallet Scales

- Great for weighing pallets and large bulky and heavy items
- Adjustable levelling feet for uneven ground
- Can be pit mounted so that it sits flush with the ground
- Low Profile 70mm height from ground level
- Construction: Mild Steel



Code	Details	Load Capacity (kg)	Increments (kilo)	Power Supply (v)	Platform Size LxWxH (mm)	Unit Weight (kg)
M7700	Floor Pallet Scales	2000	0.5	240	1200x1200x70	75
PS3000	Floor Pallet Scales	3000	0.5	240	1200x1200x70	75

Visit [www.mhaproducts.com.au](http://www.mhaproducts.com.au) for more images and details

## ABOUT MHA PRODUCTS

At Manual Handling Australia (MHA), we have the largest range of manual handling and workplace materials handling equipment in Australia. This includes thousands of workplace and storage items suited to every workplace and lifting equipment and trolleys for almost every application. Our products aim to eliminate or reduce manual handling effort in the workplace, while boosting productivity and ensuring workplace safety.

MHA has over many years spent countless hours on product development and sourcing to ensure we can get products to make your workplace not only safer but more efficient.

MHA sources products from all over the world and sells them direct meaning there is no middle man or middle margin added giving you the best possible price and faster service. We also offer customised solutions with trolleys, lifters and many other materials handling equipment to ensure you have the perfect product to improve the safety and efficiency of your workplace.

MHA is dedicated to providing you with the highest quality products at the best possible price, with the best possible service. With a long and trusted reputation in the industry, MHA is a name you can rely on.