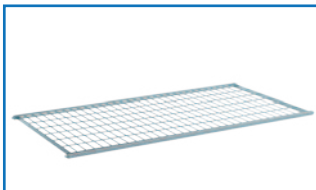


1910 Series – Fully Lockable Cage Trolley with Doors and Roof

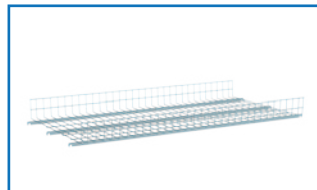
- Ideal for stock packing, goods and product movement and general use.
- Can be used for retail, in offices, warehouses and many other applications!
- Features a Back Panel for securing large items when storing and transporting
- Back Panel is removable (comes as 3 panels)
- Features a removable Top Cross Bar/Rail
- Lockable Double Swing Door with Roof for securing items being stored or transported
- Bolt together construction
- Able to fit up to 6 shelves at 200mm pitch
- Zinc plated finish
- Rubber Castors – 2 x swivel, 2 x swivel with brakes
- Load Capacity: 350kg
- Castors: 125mm
- Overall Size (LxWxH): 1472x745x1710mm
- Internal Size (LxWxH): 1305x675x1476mm
- Handle Height: 1065mm
- Base Height: 223mm



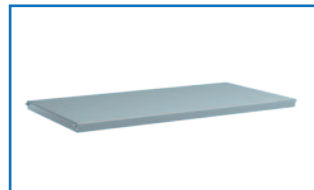
Visit www.mhaproducts.com.au for more images and details



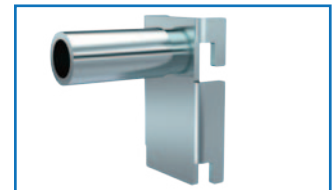
M1912 – Flat
Mesh Shelf



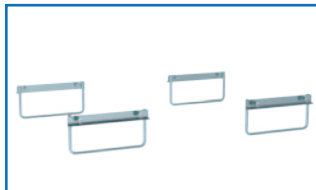
M1913 – Tray
Mesh Shelf



M1914 – Reversible
Solid/Tray Shelf



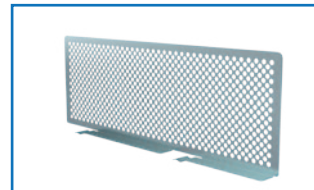
M1915 – Sloping
Shelf Bracket



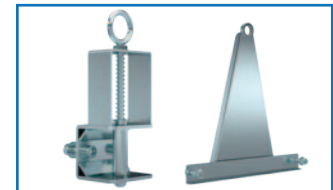
M1916 – Fork Pockets



M1917 – Centre
Wheel Kit



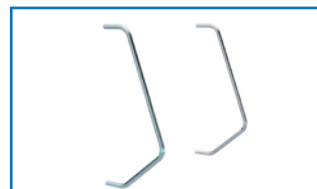
M1918 – Shelf Divider



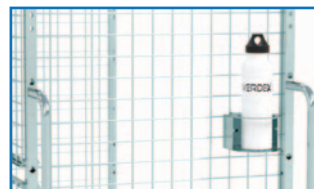
M1920 – Trolley
Towing Set



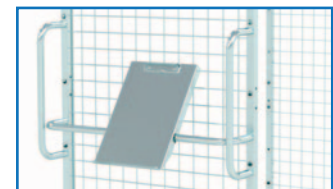
M1921 – Retractable
Ladder



M1922 – Handles to
suit Ladder



M1840Z – Drink Holder



M1841Z – Clipboard



M1848Z – A4 Pocket



M1849Z – Scanner
Holder

Code	Details	Unit Weight (kg)
M1931	Fully Lockable Cage Trolley with Doors and Roof	72
M1912	Flat Mesh Shelf to suit M1931	7
M1913	Tray Mesh Shelf to suit M1931	7.4
M1914	Reversible Solid/Tray Shelf to suit M1931	17
M1915	Sloping Shelf Bracket to suit M1912 & M1914 Shelves	0.3
M1916	Fork Pockets to suit M1931	3
M1917	Centre Wheel Kit to suit M1931	27
M1918	Shelf Divider to suit Mesh Shelf (M1912 & M1913)	0.85
M1920	Trolley Towing Set to suit M1931	3
M1921	Retractable Ladder to suit M1931	9
M1922	Handles to suit Retractable Ladder (M1921)	2
M1840Z	Optional Zinc Drink Bottle Holder to suit M1931	0.5
M1841Z	Optional Clipboard Writing Panel to suit M1931	1.5
M1848Z	Optional Zinc A4 Pocket to suit M1931	1
M1849Z	Optional Zinc Scanner Holder to suit M1931	0.7

Visit www.mhaproducts.com.au for more images and details