

## Heavy Duty 2 & 3 Tier Trolleys

- Bolt together steel construction (supplied latpack)
- Powder coated blue
- Rubber castors: 2 x fixed & 2 x swivel with brakes
- Castors: 160mm
- Load Capacity: 550kg
- Handle Height: 1000mm
- Shelf Size: 1100x600mm
- Overall Size (LxWxH): 1305x610x990mm
- M1862 Unit Weight: 66kg
- Platform Size: 1100x600mm
- Platform Heights: 230 + 720mm
- Optional 200mm diameter flat free wheel kit available
- Flat free wheel kit is ideal when using trolley on uneven ground



M1862



M1863

**M1862 with reversed tray option\***

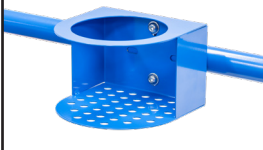
Shelves can be reversed & used as a tray option



**M1852 Extra Shelf**



**M1840 Drink Holder**



**M1841 Clipboard Holder**



**M1842 Laptop Holder**



**M1843 Mesh Basket**



**M1844 Accessory Shelf**



**M1845 Flat Free Wheel Kit**



**M1846 Floor Lock Brake**



**M1848 A4 Pocket**



**M1849 Scanner Holder**



**M1853 Centre Wheel Kit**



Code	Details
M1862	Heavy Duty 2 Tier Trolley
M1863	Heavy Duty 3 Tier Trolley
M1840	Drink Holder Attachment
M1841	Clipboard Holder Attachment
M1842	Laptop Holder Attachment
M1843	Mesh Basket Accessory
M1844	Accessory Shelf Attachment
M1853	Centre Wheel Kit with swivel brake
M1845	Flat Free Wheel Kit
M1848	A4 Pocket Holder
M1849	Scanner Holder Attachment
M1852	Optional Extra Shelf

Visit [www.mhaproducts.com.au](http://www.mhaproducts.com.au) for more images & details