

SEE INSIDE FOR THE BEST DEALS ON WORKPLACE EQUIPMENT



SCAN TO VIEW THE
BIGGEST RANGE IN AUSTRALIA

☎ 1800 750 900

➔ www.mhaproducts.com.au

✉ sales@mhaproducts.com.au





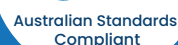
42 Mineral Sizer Court, Narangba QLD 4509
sales@mhaproducts.com.au

23 Hawthorne Avenue, Marsden Park NSW 2765
sales@mhaproducts.com.au

43 Zenith Road, Dandenong South VIC 3175
sales@mhaproducts.com.au

16 Waverley Ave, Edwardstown SA 5039
sales@mhaproducts.com.au

 www.mhaproducts.com.au



Simply add your preferred giveaway promo to your cart depending on your order value



DELIVERING AUSTRALIA WIDE DAILY

**NEW 320 PAGE
CATALOGUE OUT NOW**
*Scan to view our full
range online*



Heavy Duty Mesh Cage Trolley

- These cage trolleys are an ideal trolley for stock packing & goods movement
- The base folds up for compact storage which is great if you have multiple trolleys so they can be stored in a compact area
- Supplied with signboard area on the side
- Optional pneumatic castor kit available online*
- Load Capacity with standard castors: 500kg
- Shelf Capacity: 125kg
- Rubber castors: 2 x swivel & 2 x swivel with brakes
- Base Height: 200mm
- Distances Between Shelves: 360, 420, 420, 300mm (top to bottom)
- Shelf Size: 1020x750mm
- Castors: 125mm
- Overall Size (LxWxH): 1100x850x1700mm
- Powder coated finish
- Unit Weight: 50kg

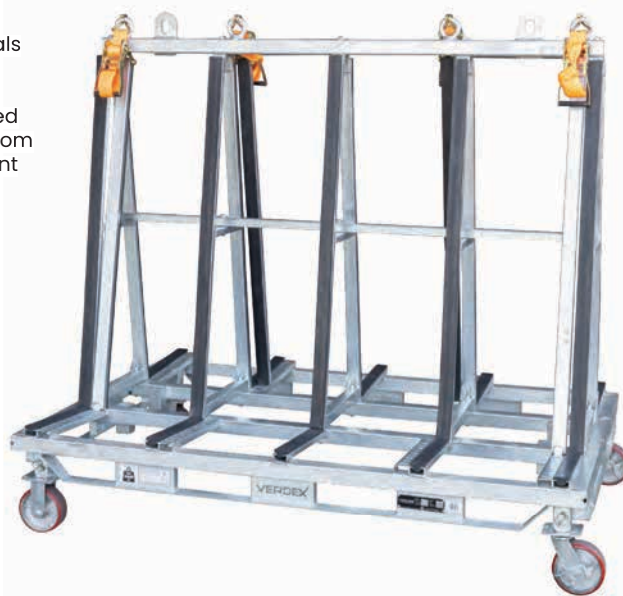


Pictured with extra shelves*

Code	Details	WAS	NOW
M1900	Heavy Duty Mesh Cage Trolley	\$987	\$886
M1901	Optional Shelves to suit	\$165	\$148

A-Frame Trolley for Glass - 1800mm

- Suitable for storing & transporting glass, stone & other sheet materials
- Load is secured by 4 adjustable clamp bars
- Detachable ratchet straps supplied
- Rubber profiles protect the load from damage & help prevent movement
- Heavy duty A Frame construction for maximum stability
- 150mm poly wheels with brakes allow easy maneuvering around the worksite
- Wheel kit is designed for quick release with a provision for storage when not in use
- Base is designed with racking locators to suit storage in high-bay racking
- Load Capacity: 2000kg
- Fork Pocket Size: 250x80mm
- Maximum Load Width: 340mm
- Overall Size: (LxWxH) 1800x1150x1620mm
- Zinc finish
- Unit Weight: 130kg



4-way fork access & crane lugs fitted for transport by forklift or crane



Code	WAS	NOW
M1281	\$1,980	\$1,782

1 Fixed Handle Platform Trolley

- Powder coated steel construction with vinyl decks
- Surround bumper on perimeter of trolley
- Load Capacity: 370kg
- Polyurethane castors: 2 x fixed & 2 x swivel
- Castors: 125mm
- Overall Size (LxWxH): 945x615x870mm
- Platform Size (LxW): 880x580mm
- Platform Height: 190mm
- Unit Weight: 16kg



Code	WAS	NOW
M1010	\$269	\$240

1 Fixed Handle Large Platform Trolley

- Powder coated steel construction with vinyl decks
- Surround bumper on perimeter of trolley
- Load Capacity: 300kg
- Handle Height: 890mm
- Castors: 160mm
- Rubber castors: 2 x fixed & 2 x swivel
- Platform Height: 240mm
- Platform Size: 1150x750mm
- Unit Weight: 35kg



Code	WAS	NOW
M1012	\$436	\$390

3 Tier Platform Trolley

- Powder coated steel construction with vinyl decks
- Surround bumper on perimeter of trolley
- Ergonomically designed with handle at optimum height
- Load Capacity: 370kg
- Polyurethane castors: 2 x fixed & 2 x swivel
- Castors: 125mm
- Handle Height: 990mm
- Shelf Size: 920x620mm
- Shelf Heights: 180+480+780mm
- Unit Weight: 36kg



Code	WAS	NOW
M1026	\$598	\$535

2 Tier Cage Platform Trolley

- Ergonomically designed
- Powder coated steel construction with vinyl decks
- Surround bumper on perimeter of trolley
- Load Capacity: 370kg
- 125mm Polyurethane castors: 2 x fixed & 2 x swivel
- Handle Height: 1000mm
- Platform Size: 920x620mm
- Platform Heights: 180+650mm
- Overall Size: 960x620x1000mm
- Unit Weight: 33kg



Code	WAS	NOW
M1036	\$565	\$498

Heavy Duty Steel Platform Trolley

- Heavy duty steel platform trolleys are ideal for general warehouse use
- Heavy duty polyurethane castors
- Welded steel construction
- Durable baked enamel paint finish
- Load Capacity: 540kg
- Platform Height: 290mm
- 200mm Castors: 2 x swivel & 2 x fixed
- Platform Size: 1220x610mm
- Overall Length: 1320mm
- Handle Height: 970mm
- Unit Weight: 36kg



Code	WAS	NOW
M1041	\$478	\$430

Aluminium Platform Trolley

- Lightweight & corrosion resistant
- Highly maneuverable heavy duty construction
- Checker plate deck
- Removable handle
- Load Capacity: 500kg
- Handle Height: 1010mm
- Platform Height: 260mm
- Platform Size: 930x620mm
- 125mm polyurethane castors: 2 x fixed & 2 x swivel with brakes
- Unit Weight: 22kg
- Optional handle & puncture proof wheel kit available online*



Code	WAS	NOW
M1050	\$730	\$655

3 Tier Multi Shelf Trolley - blue

- Ideal for order picking & transporting goods
- Shelves can be used as a flat platform or turned upside down & used as a tray
- Powder coated finish
- Overall Size: (LxWxH) 1080x480x940mm
- 125mm Rubber Castors: 2 x swivel & 2 x swivel with brakes
- Load Capacity: 250kg
- Shelf Size: 900x440mm
- Distance Between Shelves: 250mm
- Top Shelf Height: 760mm
- Unit Weight: 30kg



Code	WAS	NOW
M1660	\$590	\$531

350L Waste Collection Trolley

- Great for use in warehouses & on sites, for general waste & rubbish
- 2 front wheels & 1 rear wheel for easy transportation
- Pull handle which releases the bin forward
- Load Capacity: 350kg
- Bin Capacity: 350L
- Front Wheel Size: 340mm
- Rear Wheel Size: 125mm
- Bin Size (LxWxH): 1350x850x1040mm
- Unit Weight: 72kg



Code	WAS	NOW
M6300	\$669	\$598

2 Tier Utility Service Cart

- Heavy duty plastic construction which resists dents, chips & rust
- Polypropylene handles with aluminium frames
- Sturdy & stable but lightweight making it easy to manoeuvre
- Load Capacity: 250kg
- 100mm Rubber castors: 2 x swivel & 2 x swivel with brakes
- Tray Size: 680x450mm
- Overall Size (LxWxH): 860x480x950mm
- Trolley Unit Weight: 11kg
- Optional drawer to suit listed below (M1483)*



Code	WAS	NOW
M1482	\$295	\$265

3 Tier Utility Service Cart

- Heavy duty plastic construction which resists dents, chips & rust
- Supplied standard with 2 removable buckets
- Small Bucket Size: 360x290x360mm
- Large Bucket Size: 360x290x560mm
- Load Capacity: 250kg
- Silent, non-marking 100mm swivel castors (2 locking castors)
- Top Shelf Internal Size: 450x740mm
- Overall Size (LxWxH): 1395x520x975mm
- Unit Weight: 19kg



Code	WAS	NOW
M7100	\$585	\$525

Utility Carts with side panels

- Utility Carts with Side Panels offer enhanced load security & versatility for various transportation needs
- The Carts are versatile & reliable solutions for safely transporting goods & materials in diverse settings
- These utility carts have polypropylene side panels which keep the load more secure on the trolley
- Rubber castors: 2 x swivel & 2 x swivel with brakes
- Load Capacity: 250kg
- Castors: 100mm



Code	Details	Overall Size (LxWxH)	Unit Weight	WAS	NOW
M1455	3 Tier Service Trolley	860x480x1000mm	15kg	\$435	\$390
M1456	Extra Long 3 Tier Service Trolley	1110x520x1010mm	21kg	\$495	\$445
M1483	Drawer Unit with Lock to suit Trolleys	-	5kg	\$145	\$130



Stainless Steel Instrument Trolley (with 4 half drawers & 1 full drawer)

- The Stainless Steel Instrument Trolley with 4 Half Drawers & 1 Full Drawer is designed for efficient storage & organisation of medical instruments & supplies
- High grade 304 grade stainless steel
- 125mm deep drawers
- German manufactured drawer runners
- Soft closing Magnetic drawers
- Rubber castors: 2 x swivel & 2 x swivel with brakes
- Front Castors feature locks
- Smooth welding
- Shelf Capacity: 80kg
- Drawer Capacity: 25kg
- Overall Size (WxDxH): 800x500x970mm
- Castors: 95mm
- Unit Weight: 44kg



Code	WAS	NOW
M1540	\$3,135	\$2,820

4 Drawer Stainless Steel Instrument Trolley

- High grade 304 grade stainless steel
- 125mm deep drawers
- German made drawer runners
- Soft closing Magnetic drawers
- Rubber castors: 2 x swivel & 2 x swivel with brakes
- Front Castors feature locks
- Smooth welding
- Drawer Capacity: 25kg
- Overall Size (WxDxH): 500x500x900mm
- Castors: 95mm
- Unit Weight: 34kg



Code	WAS	NOW
M1534	\$1,282	\$1,150

Stainless Steel Instrument Trolley

- These single instrument trolleys are designed to allow for better usability, safety & efficiency of handling specific instruments across various professional settings
- High grade 304 grade stainless steel
- Rubber castors: 2 x swivel & 2 x swivel with brakes
- Front Castors feature locks
- Smooth welding
- Shelf Capacity: 80kg
- Overall Size (WxDxH): 500x500x900mm
- Castors: 95mm
- Unit Weight: 10.5kg



Code	WAS	NOW
M1546	\$494	\$444

Double Tub Order Picking Trolley

- Heavy Duty trolley, which is ideal for order picking & general warehouse applications
- Simple bolt together construction
- Powder coated finish
- Load Capacity: 250kg
- Overall Size (LxW): 1010x650mm
- Handle Height: 1050mm
- Top Rail Height: 880mm
- 125mm Rubber castors: 2 x swivel & 2 x swivel with brakes
- Bottom Shelf Height: 220mm
- Unit Weight: 21kg
- Accessories are optional extras & sold separately online*



Code	WAS	NOW
M1611	\$435	\$390

Heavy Duty Cage Trolley

- Ideal for transporting goods safely & securely
- Powder coated finish
- 125mm Rubber castors: 2 x swivel & 2 x swivel with brakes
- Optional pneumatic wheel kit available online*
- Load Capacity with standard wheels: 500kg
- Load Capacity with pneumatic wheels: 200kg
- Internal Size (LxWxH): 1030x720x750mm
- Overall Size (LxWxH): 1085x795x990mm
- Unit Weight: 75kg



Can be completely folded when not in use*

Code	WAS	NOW
M1090	\$735	\$660

Folding Aluminium Hand Truck

- Great lightweight hand trucks for general load carting
- Crafted from high-quality aluminium, our hand trucks are exceptionally lightweight, making them easy to maneuver & transport
- Folds completely flat
- Features a clip on attachment to fit our V-Card folding basket (M1805)
- Load Capacity: 68kg
- Foot Size: 390x280mm
- Open Size: (LxWxH) 400x400x1000mm
- Folded Size: (LxWxH) 385x55x635mm
- Unit Weight: 3.3kg



Code	WAS	NOW
M1178	\$165	\$148

Aluminium Convertible Hand Trolley

- Quickly convert from a 2 wheel upright trolley to a 4 wheel platform trolley
- 2 Wheels Load Capacity: 200kg
- 4 Wheels Load Capacity: 250kg
- Large Wheel Size: 260mm
- Rubber Castor Wheel Size: 125mm
- Foot Plate Size (WxD): 460x180mm
- Vertical Size: (WxDxH): 500x470x1560mm
- Horizontal Size: (LxWxH): 1450x500x1140mm
- Lockable Castor Wheels
- Flat Free Tyres
- Unit Weight: 19kg



Code	WAS	NOW
M1181	\$485	\$436

Flat Platform Steel Dollie

- Designed to facilitate the movement of furniture & equipment with ease due to their low height & high capacity
- Features a non slip vinyl platform with a PVC bumper strip around the edge
- Load Capacity: 370kg
- Polyurethane castors
- Castors: 125mm
- Overall Size: (LxWxH) 920x620x180mm
- Unit Weight: 15kg



Code	WAS	NOW
M1220	\$195	\$175

Furniture Mover Set

- Great for moving heavy furniture & equipment
- Winch handle geared mechanism
- Non marking castors
- Sold as a set of 2 only
- Ratchet straps are included
- Load Capacity: 600kg
- Castors: 150mm
- Lifting Height: 300mm
- Lifting Plate Size: 120x225mm
- Overall Size (LxWxH): 570x390x825mm
- Unit Weight (Set of 2): 34kg



Code	WAS	NOW
M1225	\$892	\$800

Blue 280L Plastic Bin

- Heavy duty rotomoulded bin
- Capacity of bin: 280L
- Overall size: (LxWxH) 1030x730x600mm
- Internal base size: (LxW) 780x500mm
- Internal top size: (LxW) 910x615mm
- Wall thickness: 4mm
- Unit Weight: 8.5kg
- Trolley base kit available online (code M1270B) & is also available in a white colour



Code	WAS	NOW
M1271	\$395	\$355

X Shape Laundry Cart - 150L

- The X Shape Laundry Cart 150L is a versatile & lightweight solution for transporting linen or waste
- Can be folded when not in use
- Strong vinyl bag
- Load Capacity: 100kg
- Volume Capacity: 150L
- 100mm Rubber castors: 4 x swivel
- Overall Size (LxWxH): 620x620x995mm
- Unit Weight: 10kg



Code	Details	WAS	NOW
M9060	X Shape Laundry Cart 150L	\$222	\$199
M9061	Replacement Bag to suit	\$57	\$51

2 Tier Steel Tub Trolley

- Simple bolt together construction
- Load Capacity with standard castors: 300kg
- Load Capacity with wheel kit: 200kg
- Overall Size (LxWxH): 1095x660x1050mm
- Handle Height: 1050mm
- 125mm rubber castors: 2 x fixed & 2 x swivel with brakes
- Base Height: 184mm
- Upper Level Height: 875mm
- Distance between levels: 665mm
- Unit Weight: 28kg
- See online for optional wheel kit & accessories*

Trolley & Tub Kits available online! View here:



Code	WAS	NOW
M1882	\$665	\$595

3 Tier Steel Tub Trolley

- Simple bolt together construction
- Load Capacity with standard castors: 300kg
- Load Capacity with wheel kit: 200kg
- Overall Size (LxWxH): 1095x660x1050mm
- Handle Height: 1050mm
- 125mm rubber castors: 2 x fixed & 2 x swivel with brakes
- Base Height: 184mm
- Upper Level Height: 875mm
- Distance between levels: 347+307mm
- Unit Weight: 32.3kg
- See online for optional wheel kit & accessories*

Trolley & Tub Kits available online! View here:



Code	WAS	NOW
M1883	\$775	\$695

2 Tier Steel Single Basket Trolley

- Simple bolt together construction
- Mesh basket as top tray with 25mm punch holes
- Load Capacity with standard castors: 300kg
- Overall Size (LxWxH): 1095x660x1050mm
- Handle Height: 1050mm
- 125mm rubber castors: 2 x fixed & 2 x swivel with brakes
- Base Height: 184mm
- Basket Size: 905x600x225mm
- Upper Level Height: 655mm
- Distance between Shelves: 460mm
- Unit Weight: 35.5kg
- See online for optional wheel kit & accessories*



Code	WAS	NOW
M1885	\$779	\$695

2 Tier Steel Double Basket Trolley

- Simple bolt together construction
- Removable bottom mesh basket
- Mesh basket as top tray with 25mm punch holes
- Load Capacity with standard castors: 300kg
- Overall Size (LxWxH): 1095x660x1050mm
- Basket Size: 905x600x225mm
- Distance Between Baskets: 230mm
- Upper Level Height: 655mm
- Handle Height: 1050mm
- Base Height: 184mm
- 125mm rubber castors: 2 x fixed & 2 x swivel with brakes
- Unit Weight: 45kg
- See online for optional wheel kit & accessories*



Code	WAS	NOW
M1886	\$885	\$795

Mesh Cage Trolley with Lockable Double Swing Mesh Door

- Mesh Sides
- Powder coated blue finish
- Double Swing Door (180° opening)
- 125mm Rubber Castors: 2 x fixed & 2 x swivel with brakes
- Load Capacity with standard wheels: 300kg
- Load Capacity with wheel kit: 200kg
- Overall Size (LxWxH): 1095x660x1050mm
- Internal Size (LxWxH): 910x605x690mm
- Handle Height: 1050mm
- Base Height: 184mm
- Mesh Size: 50x50mm
- Unit Weight: 44kg



See online for optional wheel kit & accessories*

Code	WAS	NOW
M1891	\$755	\$675



Mesh Cage Trolley with lockable double swing mesh doors & lockable lid

- Mesh Sides
- Powder coated blue finish
- Lockable Double Swing Door (180° opening)
- 125mm Rubber Castors: 2 x fixed & 2 x swivel with brakes
- Load Capacity with standard wheels: 300kg
- Load Capacity with wheel kit: 200kg
- Overall Size (LxWxH): 1095x660x1050mm
- Internal Dimensions (LxWxH): 910x605x670mm
- Handle Height: 1050mm
- Base Height: 184mm
- Mesh Size: 50x50mm
- Unit Weight: 50kg
- See online for optional wheel kit & accessories*



Code	WAS	NOW
M1892	\$835	\$750

5 Tier Steel Trolley

- Simple bolt together construction
- Load Capacity with standard castors: 300kg
- Handle Height: 1050mm
- 125mm rubber castors: 2 x fixed & 2 x swivel with brakes
- Overall Shelf Size: 960x655mm
- Internal Tray Size: 905x600mm
- Base Height: 184mm
- Upper Shelf Height: 1573mm
- Overall Size (LxWxH): 1095x660x1573mm
- Distance between shelves: 313, 327, 312, 327mm
- Unit Weight: 62kg
- See online for optional wheel kit & accessories*



Code	WAS	NOW
M1895	\$1,187	\$1,065

2 Tier Trolley with bottom basket

- Simple bolt together construction
- Reversible top shelf which gives a tray option
- 125mm rubber castors: 2 x fixed & 2 x swivel with brakes
- Internal Tray Size: 905x600
- Upper Shelf Height: 1221mm
- Distance between shelves: 337.5mm
- Load Capacity with standard castors: 300kg
- Handle Height: 1050mm
- Overall Size (LxWxH): 1095x660x1221mm
- Basket Size: 905x600x375mm
- Unit Weight: 51kg
- Base Height: 184mm
- See online for optional wheel kit & accessories*



Code	WAS	NOW
M1896	\$1,155	\$1,035

Mesh Cage Trolley with 2 tiers

- Can be used for various storage & transportation purposes across a range of industries
- 125mm rubber castors: 2 x fixed & 2 x swivel with brakes
- Mesh Size: 50x50mm
- Overall Shelf Size: 960x655mm
- Internal Tray Size: 905x600
- Upper Shelf Height: 1221mm
- Distance between shelves: 337.50mm
- Load Capacity with standard castors: 300kg
- Load Capacity with wheel kit: 200kg
- Handle Height: 1050mm
- Base Height: 184mm
- Overall Size (LxWxH): 1095x660x1211mm
- Internal Size (LxWxH): 910x605x670mm
- Unit Weight: 63kg
- See online for optional wheel kit & accessories*



Pictured with 6 x M7833 Stack & Nest Tubs*

Code	WAS	NOW
M1898	\$1,245	\$1,120

Scissor Lift Trolleys

- These units help take the strain out of loading & unloading items from raised levels. The table is elevated by a pump action foot pedal & smoothly lowered by a hand operated release trigger
- Double scissor models give the added advantage of elevating loads of up to a height of 1575mm
- Foot operated hydraulic operation
- Positive braking system on rear wheels
- Lever release control
- Safety overload bypass valve
- Durable powder-coated finish
- Stepless rate of lowering regardless of load weight



Code	Details	Load Capacity	Platform Size (LxW)	Min Height	Max Height	Unit Weight	WAS	NOW
M2002	Single Scissor Lift Trolley	500kg	850x500mm	340mm	880mm	81kg	\$796	\$715
M2010	Double Scissor Lift Trolley	350kg	910x500mm	355mm	1300mm	105kg	\$928	\$835
M2011	Double Scissor Lift Trolley	500kg	1010x520mm	435mm	1585mm	168kg	\$1,289	\$1,155

Stainless Steel Scissor Lift Trolleys

- These stainless steel scissor lift trolleys are great for use in food, pharmaceutical or hygiene areas
- Foot operated hydraulic operation
- Lever release control
- Safety overload bypass valve
- Stepless rate of lowering regardless of load weight
- Stainless Steel Grade 304
- Scissor & pump unit is galvanised
- 100mm Polyurethane castors: 2 x fixed & 2 x swivel with brakes
- Handle Height: 1000mm



Code	Details	Load Capacity	Table Size (LxW)	Lifting Range	Unit Weight	WAS	NOW
M2040	Stainless Steel Scissor Lift Trolley (100kg)	100kg	700x445mm	250-1220mm	55kg	\$1,720	\$1,548
M2041	Stainless Steel Scissor Lift Trolley (350kg)	350kg	830x500mm	330-1295mm	78kg	\$2,103	\$1,892

Self Propelled Electric Scissor Lift Trolley with Cage (double scissor)

- Comes complete with removable side cage
- Includes centre wheel unit which makes it easy to manoeuvre loads in narrow aisles or tight spaces
- Load Capacity: 400kg
- Batteries: 2x12V 33Ah
- Curtis Controller: 70A
- Motor (Driving): 400W
- Motor (Lifting): 400W
- Lifting Time: 17 seconds
- Table Size: 1000x600mm
- Lifting Range: 450-1625mm
- Cage Height: 450mm
- Overall Size (LxWxH): 1340x600x1055mm
- 4 x 150mm swivel castors with brakes
- 2 x pneumatic centre drive wheels
- Middle Wheels: 260mm
- Unit Weight: 234kg



Code	WAS	NOW
M2083	\$5,920	\$5,335

Single Scissor Electric Lift Table

- Heavy duty design & construction with high quality European power packs
- Suitable for on floor applications or in floor pit applications
- Self lubricating bushings on pivot points
- Yellow & black powder coated steel
- Low volt (24v) control box with up-down buttons
- Lifting Capacity: 2000kg
- Table Size (WxL): 850x1300mm
- Base Frame Size: 785x1255mm
- Minimum Height: 230mm
- Maximum Height: 1000mm
- Raise Time: 20-25 Seconds
- Power Supply: 240 Volt
- Unit Weight: 235kg



Removable lifting eyes to facilitate installation & maintenance



Watch a video of this in operation on our website here: www.mhaproducts.com.au/M2150



Code	WAS	NOW
M2150	\$4,425	\$3,980

Large Single Scissor Electric Lift Table

- Heavy duty design & construction with high quality European power packs & self lubricating bushings on pivot points
- Upper platform lifted with aluminium safety bar
- Internal power pack equipped with relief valve
- Powder coated steel
- Lifting Capacity: 2000kg
- Table Size (WxL): 1000x2000mm
- Base Frame Size: 785x1630mm
- Minimum Height: 250mm
- Maximum Height: 1300mm
- Raise Time: 25-30 Seconds
- Power Supply: 240 Volt
- Unit Weight: 315kg



Removable lifting eyes to facilitate installation & maintenance



Watch a video of this in operation on our website here: www.verdex.com.au/M2151



Code	WAS	NOW
M2151	\$5,695	\$5,125

Double Scissor Electric Lift Table

- Heavy duty design & construction with high quality European power packs & self lubricating bushings on pivot points
- Safety clearance between scissors prevents trapping
- Upper platform fitted with aluminium safety bar
- Yellow & black powder coated steel
- Lifting Capacity: 4000kg
- Table Size: 1200x1720mm
- Base Frame Size: 900x1600mm
- Raise Time: 55-65 secs
- Minimum Height: 400mm
- Maximum Height: 2050mm
- Power Supply: 3 Phase 415 Volt
- Unit Weight: 520kg



Removable lifting eyes to facilitate installation & maintenance



Watch a video of this in operation on our website here: www.mhaproducts.com.au/M2166



Code	WAS	NOW
M2166	\$7,987	\$7,188

Powered Rotatable Electric Lift Table

- The pallet elevator is electric up & down via pendant control & electric rotating top
- Ideal for varying weight pallets as no need to change springs
- Can be easily transported around factories with a forklift
- No ground fixing required
- Load Capacity: 2000kg
- Fork Pocket Size: (WxH) 170x90mm
- Base Frame Size (LxW): 935x915mm
- Lifting Range: 340-710mm
- Table Diameter: 1110mm
- Power: 240V
- Unit Weight: 190kg



Powered Rotation in both directions which can be set to rotate continuously



Watch a video of this in operation on our website here:
www.mhaproducts.com.au/M2126



Code	WAS	NOW
M2126	\$8,160	\$7,344

Bishamon Pneumatic Rotating Pallet Positioner

- Designed to eliminate worker bending by automatically raising & lowering pallets during loading or unloading without the use of mechanical springs, motors or hydraulics
- EZ Loaders also allow easy pallet rotation for near-side loading so the worker does not have to reach or strain
- As the load weight changes, the EZ Loader automatically adjusts, keeping the top of the load at a convenient working height
- Made from Powder coated steel
- Load Capacity: 110-1800kg
- Lifting Range: 267-775mm
- Base Frame Size (WxL): 617x1245mm
- Unit Weight: 172kg



Features a 3 position knob to allow adjustment of the collapsed capacity without changing the air pressure



Watch a video of this in operation on our website here:
www.mhaproducts.com.au/M2175



Code	WAS	NOW
M2175	\$6,858	\$6,170

The Edge – Electric Pallet Truck

- Load Capacity: 1500kgs
- Length of Tines: 1185mm
- Min Fork Height: 85mm
- Lowered Height: 80mm
- Lift Height: 115mm
- Raised Height: 195mm
- Wheel Type: Polyurethane
- Travel Speed (unloaded): 5.8 Km/h
- Turning Radius: 1330mm
- Battery: 24V 20Ah (3-6 Hour Battery Life)
- Overall Size (LxW): 1530x685mm
- Electric Brake
- Brushless AC motor
- Emergency stop button
- Unit Weight: 126kg



M2386



Watch a video of this in operation on our website here:
www.mhaproducts.com.au/M2385



Code	Details	WAS	NOW
M2385	The Edge – Electric Pallet Truck 1500kg – 685mm wide	\$3,895	\$3,505
M2386	The Edge – Additional Battery 24V 20Ah	\$640	\$576



Battery Electric Platform Work Positioner – 150kg

- Offering a convenient & efficient solution for lifting tasks in a wide range of industries, ensuring safety, maneuverability & ease of operation
- Ideal for use in narrow aisles & confined spaces
- Automatic electric overload protection system ensures safe operation
- Load Capacity: 150kg
- Load Centre: 237mm
- Platform/ Attachment Size: 475x605mm
- Lifting/Lowering Speed: 55mm/s
- Steering Wheel: 100mm
- Battery: 12x2-10Ah
- Charger: DC-24V-2A
- Lifting Range: 130-1500mm
- Overall Size (LxWxH): 920x505x1950mm
- Unit Weight: 65kg



Code	WAS	NOW
M2191	\$3,450	\$3,105

Stainless Steel Battery Electric Work Positioner – 100kg

- Automatic electric overload protection system ensures safe operation
- Load Capacity: 100kg
- Lifting time: 30 seconds
- Leg Height: 115mm
- Battery: 24v, 12.0Ah
- Power: 24v, 200W
- Load Centre: 235mm
- 75mm fixed rubber castors on front
- 125mm swivel rubber castors with brakes on rear
- Lifting Range: 150-1760mm
- Platform Attachment: 470x600mm
- Overall Size (LxWxH): 890x600x1990mm
- Unit Weight: 63kg



Watch a video of this in operation on our website here:
www.mhaproducts.com.au/M2210



Code	WAS	NOW
M2210	\$5,500	\$4,950

Straddle Leg Fork Stacker – 500kg capacity

- Manual hydraulic lift via pallet truck style handle or foot pedal
- Straddle leg model for use with standard 1170mm Australian pallets
- Load Capacity: 500kg
- Lockable wheels as standard
- Powder coated yellow
- Tine Length: 1060mm
- Rear Castors: 150mm
- Front Castors: 80mm
- Lifting Range: 70-1600mm
- Tine Width: 200-950mm
- Overall Size (LxWxH): 1600x1500x2000mm
- Unit Weight: 225kg



Watch a video of this in operation on our website here:
www.mhaproducts.com.au/M2281



Code	WAS	NOW
M2281	\$2,395	\$2,155

4.5 Tonne Telescopic Long Jib

- A general purpose jib which is great for reaching across pits & areas where the forklift can't access as it has a 3.5m reach when fully extended
- Finish: Zinc plated
- 6 Jib Positions
- Safe Working Load: 4500kg (SWL load chart is shown on jib)
- Fork Pocket Size: 185x65mm
- Fork Pocket Centres: 290mm
- Load Centre: 870mm
- HGC: 836mm
- Jib Length when:
closed: 2000mm
extended: 3500mm
- Unit Weight: 140kg



Jib shown fully extended*

Code	WAS	NOW
M2421	\$1,678	\$1,510

2 Tonne Hook & Tow Jib

- Suitable for most forklifts & is a simple slip-on attachment with safety chain & swivel hook as pictured
- Safe Working Load: 2000kg
- Load Centre: 1160mm
- HGC: 655mm
- Fork Pocket Size: 140x65mm
- Fork Pocket Centres: 250mm
- Fork Pocket Length: 1220mm
- Overall dimensions: (LxWxH) 1410x420x140mm
- Hook jib has 2 lifting positions
- Maximum weight on towball must not exceed 500kg
- Finish: Zinc plated
- Unit Weight: 45kg



Code	WAS	NOW
M2430	\$650	\$585

Trailer Stabilising Jack Stand

- A heavy-duty support system designed to provide stability & safety for trailers with a capacity of up to 45 tonnes
- Perfect for use in a wide range of industrial & commercial applications
- Top Diameter: 200mm
- 200mm Rubber Wheel
- Overall Dimensions (LxWxH): 574x445x1300mm
- Lifting Range 1000-1300mm
- Top Diameter: 200mm
- Static Capacity: 45,000kg
- Lifting Capacity: 18,000kg
- Unit Weight: 40kg



Code	WAS	NOW
M2451	\$592	\$532

Heavy Duty Pallet Hook - 4500kg

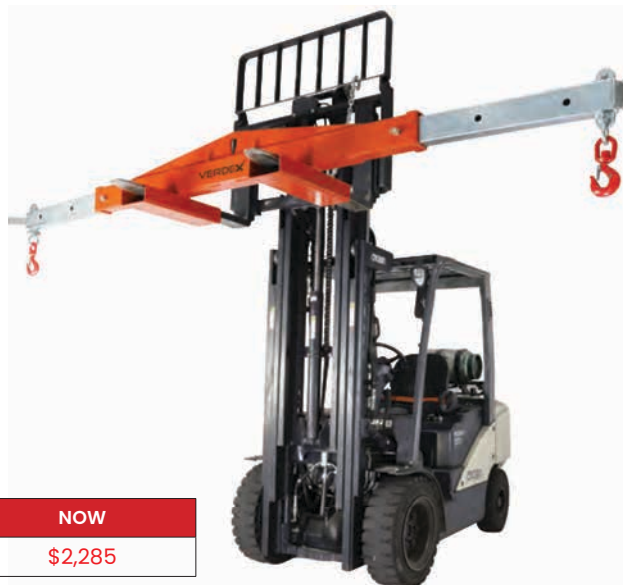
- A heavy duty 4.5 tonne capacity pallet hook for loads up to 4500kg
- Fully adjustable tines makes this unit extremely versatile
- Load balancing is carried out by positioning the lifting ring to suit the Centre of Gravity of the load
- Clearance: 1405mm (distance between tines & head)
- Finish: Enamel painted
- Designed & certified in accordance with Australian Standard AS 1418.1
- Safe Working Load (SWL): 4500kg
- Load Centre: 600mm
- Tine Size: 125x50x1070mm
- Unit Weight: 456kg



Code	WAS	NOW
M2460	\$4,565	\$4,105

Crane/Forklift Spreader Beam

- Load connection points are adjustable to 3 positions by moving the extendable arms each end
- Both extendable arms are locked into position via safety pins
- Supplied standard with a safety swivel hook each end
- The extendable arms are zinc plated with the main body painted in safety orange
- Rated Capacity: 9000kg
- Load Centre: 330mm
- HCG: 2405mm
- Overall Size: 2600x600x410mm
- Fork Pocket Size: 190x65mm
- Fork Centres: 900mm
- Unit Weight: 172kg



Code	WAS	NOW
M2470	\$2,540	\$2,285

Extension Slippers (zinc plated)

- Engineered with a slim profile, our slippers maintain stability & support while minimizing added bulk
- This design feature allows for seamless integration with your existing forklift setup, ensuring optimal maneuverability & efficiency during operation
- Slippers conform to AS2359.15
- Internal Slipper Size: 138x55mm
- External Slipper Size: 150x67mm
- Zinc Plated Finish
- Load Centre: 600mm
- HCG: 1154mm
- SWL: 4500kg
- Length: 2400mm
- Weight Per Pair: 88kg



Code	WAS	NOW
M2406	\$675	\$605

Parrot Beak Drum Lifter (single)

- Suits both steel & plastic 210L drums
- Simple auto clamp operation
- Allows the operator to remove & place drums on pallets/bunds without leaving the forklift seat
- Height adjustable for use with different drum shapes
- Capacity: 360kg
- Load Centre: 1042mm
- HCG: 604mm
- VCG: 340mm
- Finish: Powder coated yellow
- Overall Size: 930x670x850mm
- Fork Pocket Size: 750x150x55mm
- Fork Pocket Centres: 500mm
- Unit Weight: 45kg



Watch a video of this in operation on our website here:
www.mhaproducts.com.au/M5080



Code	WAS	NOW
M5080	\$785	\$706

Steel & Plastic Drum Trolley

- This drum trolley is ideal for transporting both steel & plastic drums & features solid wheels
- This trolley is also self-standing which means the operator can leave without drums falling over
- Solid Wheels: 400mm front, 75mm castors on the rear
- Load Capacity: 450kg
- Overall Size: (LxWxH) 700x750x1050mm
- Unit Weight: 24kg



Code	WAS	NOW
M5025	\$472	\$424

Galvanised Forklift Drum Grab

- The Galvanised Forklift Drum Grab offers a robust & reliable solution for efficiently handling steel drums in industrial settings
- Attaches quickly & easily to most fork trucks
- Heavy duty welded steel construction
- Lifts, transports & deposits steel drums without having to leave the drivers seat
- Finish: Galvanised
- Load Capacity: 500kg
- Load Centre: 1340mm
- HCG: 824mm
- Fork Pocket Size: 165x65mm
- Fork Pocket Centres: 325mm
- Unit Weight: 78kg



Code	WAS	NOW
M5076	\$665	\$598

Forklift Cable Drum Slippers

- Designed to safely transport & lift cable drums by forklift
- Suits spindle up to 50-80mm diameter
- Supplied with 1200x48mm diameter spindle
- Available in 3 models to suit fork arm size & capacity
- Powder coated finish
- Designed & fabricated strictly in accordance with relevant Australian Standards
- Load Centre: 1200mm
- Slipper Length: 1300mm
- Max Tine Length: 1220mm
- VCG: 50mm



Code	Details	Working Load Limit	HCG	Ext. Slipper Height	Max Tine Size	Weight Per Pair	WAS	NOW
M2417	Forklift Cable Drum Slippers (1000kg)	1000kg	715mm	60mm	100x45mm	32kg	\$756	\$680
M2418	Forklift Cable Drum Slippers (1500kg)	1500kg	677mm	67mm	130x50mm	47kg	\$837	\$750
M2419	Forklift Cable Drum Slippers (2000kg)	2000kg	657mm	72mm	155x55mm	67kg	\$1,080	\$972

Skate Wheel Expanding Conveyor

- Excellent for truck & container unloading & for assembly lines
- Self tracking flexible conveyor which expands from 1100-4000mm & can be joined to make 1 continuous conveyor system
- Height Range: 690-1000mm
- Easy & quick setup with adjustable height legs & 125mm brake castors on each leg
- Bolted steel construction with skate wheels
- Capacity: 100kg per metre
- Width: 460mm
- Unit Weight: 112kg



Watch a video of this in operation on our website here:
www.mhaproducts.com.au/M3005



Code	WAS	NOW
M3005	\$1,947	\$1,750

Expanding Roller Conveyor

- This expanding roller conveyor expands from 1500-4000mm & can be joined to make 1 continuous conveyor system
- Best suited for odd shaped cartons & bags of goods
- Easy & quick setup with adjustable height legs & 125mm brake castors on every leg
- Bolted steel construction with steel rollers
- Width: 610mm
- Capacity: 130kg per metre
- Height Range: 690-1000mm
- Unit Weight: 116kg



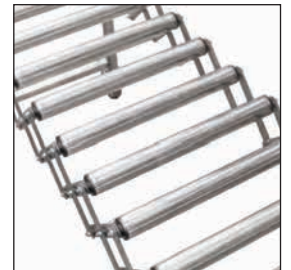
Watch a video of this in operation on our website here:
www.mhaproducts.com.au/M3011



Code	WAS	NOW
M3011	\$2,095	\$1,885

Stainless Steel Roller Expanding Conveyor - 450mm Wide

- The flexible fully stainless steel expanding roller conveyor expands from 1500-4000mm & can be joined to make 1 continuous conveyor system
- Stainless Steel rollers make this conveyor suitable for the food industry
- Easy & quick setup with adjustable height legs & 125mm brake castors on every leg
- Capacity: 130kg per metre
- Overall Width: 450mm
- Length Retracted: 1500mm
- Length Expanded: 4000mm
- Height Range: 690-1000mm
- Unit Weight: 174kg



Watch a video of this in operation on our website here:
www.mhaproducts.com.au/M3020



Code	WAS	NOW
M3020	\$8,100	\$7,290

3 Metre Poly/Steel Roller Conveyors - 600mm wide

- These conveyors provide the simple solution for moving all types of products in industries
- Powdercoated Blue Frames & Legs
- Supplied with 3 Stands
- Can be joined together to make one continuous conveyor line
- 20 Rollers Pitch: 150mm
- 40 Rollers Pitch: 75mm
- Overall Size: 3000x600x1105mm
- Adjustable Height: 805-1105mm
- Optional Castor Kit available online*



Watch a video of this in operation on our website here:
www.mhaproducts.com.au/M3340



Code	Details	Supplied with:	Capacity Per Metre	Unit Weight	WAS	NOW
M3340	Steel Roller Conveyor Kit - 600mm wide	40pcs Steel Rollers	200kg	98kg	\$1,585	\$1,425
M3341	Poly Roller Conveyor Kit - 600mm wide	40pcs Poly Rollers	120kg	88kg	\$1,585	\$1,425
M3145	Conveyor End Stop	-	-	1kg	\$55	\$49

Portable Industrial Air Conditioner

- A powerful & efficient way to provide cooling in the workplace
- TUV, SAA & Global Mark Certified
- Power supply: 220-240V-50Hz (15amp plug)
- Rated Power: 2120W
- 2 speed fan controller
- Air Flow: 800m³/h
- 1 metre drain hose supplied
- Noise Level 60 DbA
- Maximum Power: 3000W
- Maximum Suction Pressure: 2.5MPa
- Maximum Discharge Pressure: 4.5MPa
- Refrigerant: R32/840g
- Operating Temperature: 18-45°
- Overall Size: (LxWxH) 520x480x1035mm
- Unit Weight: 67kg



Watch a video of this in operation on our website here:
www.mhaproducts.com.au/M6435



2 cold air ducts
& 1 exhaust
duct supplied



4 swivel castors
(2 with brakes)



Water Tank: 8L



Code	WAS	NOW
M6435	\$2,850	\$2,250

Industrial Mobile Fan

- Ideal for cooling & ventilation in various industries. Can be easily transported, where airflow & cooling is required!
- Plastic construction
- Maximum Speed: 480r/min
- Voltage Frequency: 220-240V/50Hz
- Motor Type: Permanent magnet motors with variable speeds
- Motor Power: 600W
- Airflow: 700m³/min
- Blade Diameter: 1500mm
- Overall Size (LxWxH): 1570x760x1690mm
- Unit Weight: 58kg



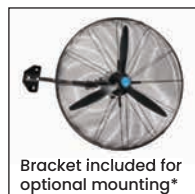
Watch a video of this in operation on our website here:
www.mhaproducts.com.au/M6434



Code	WAS	NOW
M6434	\$2,265	\$2,035

Pedestal Industrial Fan

- Quality robust construction, designed for everyday use in industrial workshops or warehouses
- Includes optional Wall Mount Bracket for a Wall Mount option
- Powdercoated steel frame
- Oscillating function
- Motor: 240v, 3 Speed
- Blade Diameter: 750mm
- Lowered Height: 1550mm
- Extended Height: 1880mm
- Overall Size (LxWxH): 815x600x1880mm
- Unit Weight: 16.4kg



Bracket included for optional mounting*



Watch a video of this in operation on our website here:
www.mhaproducts.com.au/M6432



Code	WAS	NOW
M6432	\$320	\$288

Galvanised 350L Fork Waste Bin

- Manual push over for tipping into larger bins or skips
- Fitted standard with 2 front wheels & 1 rear wheel for easy wheeling throughout workplace
- Drain plug fitted as standard
- Safe Working Load: 350kg
- HCG: 370mm
- Finish: Hot dipped galvanised
- Fork Pocket Size: 140x65mm
- Fork Pocket Centres: 367mm
- Overall Dimensions: (LxWxH) 720x1115x890mm
- Bin Capacity: 350L
- Unit Weight: 65kg



Watch a video of this in operation on our website here:
www.mhaproducts.com.au/M6005



Code	WAS	NOW
M6005	\$985	\$885

1 Tonne Waste Bin Compactor

- Used to compact bulky waste products using a forklift
- Suitable for use with a 660L wheelie bin or any larger bins
- Slip-on attachment & safety chain for quick connection
- Hot Dipped Galvanised Finish
- Capacity: 80kg
- Load Centre: 830mm
- Counterweight Dimensions (WxD): 900x500mm
- Height: 1300mm
- Fork Pocket Size: 185x65mm
- Fork Pocket Centres: 650mm
- Unit Weight: 1000kg



Watch a video of this in operation on our website here:
www.mhaproducts.com.au/M6105



Code	WAS	NOW
M6105	\$2,290	\$2,061

Self Dumping 1500kg Capacity Tipping Bins

- These large self dumping tipping bins are suitable for any waste & rubbish application
- Heavy duty construction with self dumping ability, the forklift empties the bin without the forklift operator having to leave the drivers seat
- Supplied with 4 crane lugs (top) & 2 upending lugs (underneath)
- Drain plug fitted as standard
- Optional wheel kits available
- Fork Pocket Size: 185x75mm
- Safe Working Load: 1500kg
- HCG: 580mm
- Finish: Hot Dipped Galvanised



Watch a video of this in operation on our website here:
www.mhaproducts.com.au/M6010



Code	Details	Overall Size (LxWxH)	Fork Pocket Centres	Bin Capacity	Unit Weight	WAS	NOW
M6010	Self Dumping Tipping Bin - 950L	1570x1010x1080mm	380mm	950L	164kg	\$1,850	\$1,660
M6012	Self Dumping Tipping Bin - 1850L	1570x1905x1080mm	680mm	1850L	255kg	\$2,750	\$2,475

Pull Cord Bin Tipper (suits 660L & 1100L bins)

- Pull cord tipping action activated at a safe distance by operator
- Shock absorber controls tipping forces
- Allows 160° rotation of a 660 or 1100L wheelie bin
- Enamel paint finish
- Load Capacity: 500kg
- Overall Dimensions (WxDxH): 1655x1200x1615mm
- Load Centre: 850mm
- Tipping Angle: 180°
- Fork Pocket Size: 185x65mm
- Fork Pocket Centres: 800mm
- Unit Weight: 185kg



Watch a video of this in operation on our website here:
www.mhaproducts.com.au/M6101



Code	WAS	NOW
M6101	\$2,740	\$2,465

Galvanised Concrete Collection Tray

- Designed to limit environmental damage wherever a concrete pump is being used on site
- Fitted with 4-way fork pockets and four crane lifting & up-ending lugs and is manufactured with tapered sides
- Capacity: 0.85m³
- Overall Dimensions (LxWxH): 2070x1765x400mm
- Safe Working Load: 1500kg
- Fork Pocket Centres: 870mm
- Fork Pocket Size: 160x75/160x95mm
- Galvanised Finish
- Unit Weight: 215kg



Code	WAS	NOW
M6211	\$2,240	\$2,015

70L Garbage Bin – Grey

- The 70L Garbage Bins offer a practical & durable solution for waste disposal in various settings
- 70 litre waste bins with four swivel castors & hinged lid
- Manufactured from high density polyethylene
- Resistant to decay, heat, frost, chemicals & UV Rays
- Overall Size (WxDxH): 450x440x680mm
- Castor Diameter: 50mm
- Capacity: 30kg (weight)
- Capacity: 70L (volume)
- Unit Weight: 2.8kg



Code	WAS	NOW
M6332	\$98	\$88

Round Plastic Waste Bin 168L – Grey

- Double-ribbed base which increases stability & dragging capacity
- Reinforced rims add strength & durability
- Plastic construction will not rust, chip or peel, resists dents
- Round Dollie to suit available for purchase online*
- Material: Polypropylene & UV stabilised
- Lid Supplied
- Capacity: 168L
- Overall Diameter: 700mm (including handle)
- Bin Dimensions: 620x800mm
- Unit Weight: 7kg



Code	WAS	NOW
M6312	\$116	\$105

Foot Pedal Lid Lifting Wheelie Bins

- These wheelie bins come supplied with a foot pedal operated lid
- Manufactured from high density polyethylene
- Resistant to decay, heat, frost, chemicals & UV rays
- Bin Colours available: Blue, Green, Grey
- Capacity: 240L
- Weight Capacity: 100kg
- Wheel Diameter: 200mm
- Dimensions (WxDxH): 740x590x1070mm
- Unit Weight: 14.5kg



M6345



M6346



M6347

Code	Details	WAS	NOW
M6345	Wheelie Bin With Foot Pedal – Blue 240L	\$295	\$199
M6346	Wheelie Bin With Foot Pedal – Green 240L	\$295	\$199
M6347	Wheelie Bin With Foot Pedal – Grey 240L	\$295	\$199

Forklift Sweeper Attachments

- The fork mounted attachment is a quick & easy solution for sweeping products such as sand, top soil, grain etc.
- The forklift sweeper attachment offers a practical solution for sweeping tasks, combining ease of use, stability & effective performance
- Equipped with ratchet straps to fasten securely on the forklift mast
- HCG: 205mm
- Fork Pocket Size: 218x44mm
- Fork Pocket Centre: 520mm
- Number of Bristle Rows: 8
- Bristle Height: 275mm



Code	Details	Overall Size (LxWxH)	Unit Weight	WAS	NOW
M6035	1500mm Forklift Sweeper	1500x465x326mm	75kg	\$1,820	\$1,637
M6036	1800mm Forklift Sweeper	1800x465x326mm	85kg	\$2,248	\$2,022

Verdex Auto Wheelie Bin Tipper

- The robust, fully enclosed Verdex bin tipper is the safest & most innovative unit of its kind
- It comes standard with an 1800mm tipping height which is suitable for almost every environment & application. The unit is super efficient & incorporates an Auto Tip feature & can also be operated from a distance via a remote control hand piece. For added safety it is fitted with interlocking doors to remove the risk of anything obstructing the cradle while in use
- The Verdex bin tipper has a capacity of 250kg & the standard multi-purpose cradle is designed to accommodate 80, 120 & 240 litre bins
- Power Supply: Battery with 240v built in charger
- Overall Width: 1025mm
- Overall Length: 1170mm
- Tipping Height: 1800mm
- Overall Height: 2865mm
- Capacity: 250kgs



Hand held remote control unit supplied as standard



Watch a video of this in operation on our website here:
www.mhaproducts.com.au/M6082



Code	WAS	NOW
M6082	\$12,250	\$9,950



Verdex Manual Wheelie Bin Tipper

- The Verdex Manual Wheelie Bin Tipper is a robust & efficient solution for managing waste disposal
- Designed for easy use, operators can effortlessly tip & empty wheelie bins with minimal effort
- Ideal for both residential & commercial settings
- Lifts 80L, 120L, 140L & 240L bins
- Heavy duty winch operated - no motorised pinch points
- No electrical or hydraulic components to service
- Rugged powder coated frame for weather protection
- Overall Height: 2485mm
- Lifting Capacity: 65kg
- Overall Size: (WxD) 980x930mm
- Tipping height: 1600mm
- Unit Weight: 136kg



Watch a video of this in operation on our website here:
www.mhaproducts.com.au/M6083



Code	WAS	NOW
M6083	\$5,950	\$4,995

Heavy Duty Steel Longspan Shelving (450mm deep)

- A heavy duty & versatile system which is great for storing small parts & archives
- Comes standard with 3 adjustable steel shelves (2 pieces per level) extra shelves available online*
- End frames are supplied assembled
- Standard stock sizes are listed below however other configurations & sizes can be ordered on request*
- Step beams which the steel decks sit flush with the beam
- Shelf Capacity Per Level:
1800mm Beams: 390kg
2400mm Beams: 290kg
- For overall bay length add 60mm per frame



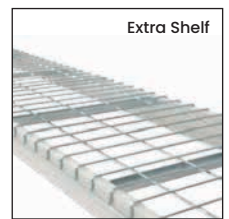
Watch a video of this in operation on our website here:
www.mhaproducts.com.au/M8000



Code	Details	Dimensions (HxWxD)	Unit Weight	WAS	NOW
M8000	Longspan Shelving Set	1800x1800x450mm	62kg	\$532	\$475
M8001	Longspan Shelving Set - Add on Bay	1800x1800x450mm	53kg	\$460	\$413
M8004	Longspan Shelving Set	2400x1800x450mm	67kg	\$574	\$515
M8005	Longspan Shelving Set - Add on Bay	2400x1800x450mm	55kg	\$481	\$432
M8015	Longspan Shelving Set	1800x2400x450mm	82kg	\$692	\$622
M8016	Longspan Shelving Set - Add on Bay	1800x2400x450mm	73kg	\$619	\$555
M8019	Longspan Shelving Set	2400x2400x450mm	87kg	\$734	\$659
M8020	Longspan Shelving Set - Add on Bay	2400x2400x450mm	76kg	\$640	\$575
M8008	Extra Shelf to Suit 1800mm Longspan Sets	1800x450mm	7kg	\$129	\$115
M8023	Extra Shelf to Suit 2400mm Longspan Sets	2400x450mm	11kg	\$182	\$162

Heavy Duty Mesh Longspan Shelving (450mm deep)

- A heavy duty & versatile system which is great for storing small parts & archives
- Mesh shelves are advantageous in minimising dust, maintaining cleanliness
- Step beams which the mesh decks sit flush with the beam
- Supplied standard with 3 adjustable mesh shelves (2 pieces per level) extra shelves available online*
- Standard longspan stock sizes are listed below however other configurations & sizes can be ordered on request*
- End frames are supplied assembled
- Shelf Capacity Per Level:
1800mm Beams: 390kg | 2400mm Beams: 290kg
- For overall bay length add 60mm per frame



Watch a video of this in operation on our website here:
www.mhaproducts.com.au/M8030



Code	Details	Dimensions (HxWxD)	Unit Weight	WAS	NOW
M8030	Longspan Shelving Set	1800x1800x450mm	59kg	\$486	\$435
M8031	Longspan Shelving Set - Add on Bay	1800x1800x450mm	50kg	\$413	\$370
M8034	Longspan Shelving Set	2400x1800x450mm	65kg	\$528	\$475
M8035	Longspan Shelving Set - Add on Bay	2400x1800x450mm	53kg	\$434	\$390
M8045	Longspan Shelving Set	1800x2400x450mm	77kg	\$709	\$635
M8046	Longspan Shelving Set - Add on Bay	1800x2400x450mm	68kg	\$636	\$570
M8049	Longspan Shelving Set	2400x2400x450mm	82kg	\$751	\$675
M8050	Longspan Shelving Set - Add on Bay	2400x2400x450mm	71kg	\$657	\$590
M8038	Extra Shelf to Suit 1800mm Longspan Sets	1800x450mm	7kg	\$114	\$102
M8053	Extra Shelf to Suit 2400mm Longspan Sets	2400x450mm	10kg	\$188	\$169

Verdex Access Platform Ladders

- Designed for safe, easy & efficient use in warehousing, vehicle maintenance, mining, aviation & heavy industry workplaces
- Super strong design fabricated from heavy duty aluminium
- 100mm deep treads improve safety & comfort when climbing
- Suited to 'high frequency' use
- Large 125mm wheels – improved portability & 'easy glide' action
- Large stable work platform: (safe & stable) 600x710mm
- Manually operated braking system with high-vis powder coated activation arm helps minimize unauthorised access
- Safety Gate fitted
- Toeboard on three sides (helps secure tools/accessories)
- Supplied with reversible shelf
- Made to AS/NZS 1892.1
- 200kg load rating
- Industrial duty rating for use on commercial sites
- Meets Work Cover requirements (safety gate + 900mm handrail, toeboard)
- Handrail Height: 1000mm



Watch a video of this in operation on our website here:
www.mhproducts.com.au/M4150



M4150



M4151



M4152



M4153



M4154



M4155



Code	Details	Platform Height	Reach Height	Open Size (LxWxH)	Unit Weight	WAS	NOW
M4150	Access Platform Ladder – 3 Step	792mm	2.8m	1315x797x1677mm	35kg	\$2,115	\$1,905
M4151	Access Platform Ladder – 4 Step	1056mm	3.1m	1321x821x1941mm	38kg	\$2,200	\$1,980
M4152	Access Platform Ladder – 5 Step	1320mm	3.3m	1489x862x2205mm	41kg	\$2,345	\$2,110
M4153	Access Platform Ladder – 6 Step	1584mm	3.6m	1655x905x2469mm	44kg	\$2,475	\$2,225
M4154	Access Platform Ladder – 7 Step	1848mm	3.9m	1826x747x2773mm	47kg	\$2,615	\$2,353
M4155	Access Platform Ladder – 8 Step	2112mm	4.1m	1993x989x2997mm	51kg	\$2,790	\$2,510

Forklift Safety Cage / Work Platform

- Supplied with 2 locking pins & bars
- Tool Tray is supplied with cage as standard
- Internal handrail with safety loops
- Complies with AS 2359-1
- Designed to carry 2 persons
- Mesh safety screen
- Toe boards all sides with skid resistant floor plate
- Load Capacity: 250kg
- Internal Floor Size: 1075x1015mm
- Overall Size: 1156x1097x2070mm
- Height to Railing: 1000mm
- Fork Pocket Size: 160x60mm
- Fork Pocket Centres: 625mm
- Load Centre: 600mm
- Zinc plated finish
- HCG: 550mm
- Unit Weight: 124kg



Code	WAS	NOW
M4000	\$1,080	\$972

All Purpose Step Ladders

- Made From Highly Durable Powder coated Steel
- Compact Folding Design
- Anti-Slip Treads
- Platform Heights:
 - M4140: 450mm
 - M4141: 680mm
- Capacity: 120kg
- Ladder Open Height:
 - M4140: 1100mm
 - M4141: 1250mm
- Overall Width: 515mm
- Unit Weight:
 - M4140: 6kg
 - M4141: 8kg



M4141

M4140

Code	Details	WAS	NOW
M4140	All Purpose Step Ladder (2 Steps)	\$92	\$82
M4141	All Purpose Step Ladder (3 Steps)	\$160	\$144

Fibreglass Industrial Platform Ladders

- These Fibreglass Industrial Platform Ladders are ideal for a wide range of industrial applications, including maintenance, construction & warehouse operations
- Their durable fibreglass construction makes them suitable for use in challenging environments where electrical hazards may be present
- Available in 3 platform heights: 900mm, 1200mm & 1500mm
- Large anti-skid work platform with raised edges - keeps feet inside the platform for greater safety & comfort
- One piece, smooth operation - simply folds out & locks
- Platform size: 600x600mm
- Rated to 150kgs
- Complies to AS/NZS 1892:1998



M4210



M4211



M4212



Simply folds out & locks for convenience*



M4220



M4230

Code	Details	Platform Height	Ladder Open Height	Unit Weight	WAS	NOW
M4210	Fibreglass Industrial Platform Ladder - 3 step	900mm	1800mm	13kg	\$325	\$292
M4211	Fibreglass Industrial Platform Ladder - 4 step	1200mm	2100mm	15kg	\$385	\$346
M4212	Fibreglass Industrial Platform Ladder - 5 step	1500mm	2400mm	17kg	\$455	\$408
M4220	Platform Ladder Castor/Wheel Kit	-	-	2.45kg	\$110	\$98
M4230	Platform Ladder Safety Gate Kit	-	-	1.65kg	\$145	\$130

10 Tonne Heavy Duty Container Ramp

- A heavy duty ramp for unloading containers of heavy products with a large forklift
- Designed for fast positioning & removal with tine pockets on the side plus pop up tine slots in the top for front removal
- Supplied standard with 100mm raised side plates which ensured the forklift remains on the ramp
- Load Capacity: 10,000kgs
- Finish: Enamel Painted
- Width: 2320mm
- Length: 1800mm
- Fork Pocket Size: 160x60mm
- Fork Pocket Centres: 510mm
- 6mm thick steel plate on ramp
- Unit Weight: 410kgs



Code	WAS	NOW
M4025	\$3,325	\$2,991

Collapsible & Stackable Stillage Cage

- Great for storing products both indoor & outdoor
- Pallet Rack Safe
- Quick collapse sides
- Load Capacity: 1200kg
- 4 way pallet truck & forklift entry
- Cages can be stacked 3 x high when loaded & 10 x high folded
- Optional wheel kit to suit available online*
- Zinc plated finish
- Internal Size (LxWxH): 1035x1035x805mm



Watch a video of this in operation on our website here:
www.mhproducts.com.au/M7541



Pictured with M7534*



M7541 pictured with M7533*



Code	Details	Overall Size (LxWxH)	Unit Weight	WAS	NOW
M7541	Collapsible & Stackable Stillage Cage	1125x1125x1040mm	87kg	\$720	\$648
M7533	Lid to suit Stillage	1130x1087x92mm	12.4kg	\$195	\$175
M7534	Full Height Divider to suit Stillage	1135x750x41mm	6.2kg	\$126	\$110

Stillage Pallet Cage (half height)

- Multi-purpose transport or storage cage
- Great for storing products both indoor & outdoor
- These cages can also be stored on pallet racking
- Double swing gate
- Load Capacity: 1000kg
- Cages can be stacked: 2 x high when loaded & 4 x high when empty
- Cage Internal Size (LxWxH): 1080x1080x448mm
- Supplied with a hardwood timber pallet
- Finish: Zinc Plated



M7509 pictured with Lid*



M7509 pictured with Divider*

Code	Details	Overall Size (LxWxH)	Unit Weight	WAS	NOW
M7509	Stillage Pallet Cage (Half Height)	1200x1200x655mm	27kg	\$520	\$468
M7528	Half Height Divider to suit Stillage	1125x345x25mm	4kg	\$96	\$86
M7533	Lid to suit Stillage	1130x1087x92mm	12.4kg	\$195	\$175

Double Width Storage Cage (low height)

- Pallet Rack Safe – unique positive locking base design
- Front & rear gates are removable
- Cage can be collapsed or assembled in seconds
- 4 Way forklift access & pallet truck entry
- Anti-tip base design
- Zinc plated finish
- Optional Half Height Divider sold separately
- Optional Wheel kit sold separately
- Optional Lid sold separately
- Stackable 4 x high loaded & 6 x high empty
- Collapsed Height: 320mm
- Load Capacity: 1050kg
- Internal Size (LxWxH): 2100x1085x430mm



M7539 pictured with M7543 & Wheel Kit*



Code	Details	Overall Size (LxWxH)	Unit Weight	WAS	NOW
M7539	Double Width Storage Cage (Low Height)	2200x1160x660mm	110kg	\$1,349	\$1,214
M7528	Half Height Divider to suit Stillage	1125x345x25mm	4kg	\$96	\$86
M7543	Bi-Fold Lid to suit Stillage	1143x1040x60mm	21kg	\$350	\$315

Lockable Mesh Storage Cage

- Lockable mesh storage cage is designed for strength, visibility & ventilation
- Ideal for use in workshops, warehouses, construction sites & industrial applications
- Can be bolted to the ground for additional security
- Key Lockable for safe & secure storage
- Supplied with 3 adjustable shelves
- Powdercoated finish
- Load Capacity: 600kg
- Overall Dimensions (WxDxH): 1150x450x1800mm
- Internal Dimensions (WxDxH): 1050x390x1770mm
- Mesh Size: 50x50mm
- Unit Weight: 70kg



Code	WAS	NOW
M7550	\$1,719	\$1,547

Gas Cylinder Cage

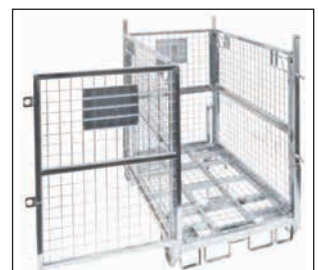
- This gas cage is a heavy duty lockable cage suited for storage of up to 24 x 9kg BBQ gas bottles but can be used for many other storage applications
- Tamper-proof lock guard
- Sturdy construction with bump rails
- Stack 3 x high when empty & 2 x high when fully loaded
- Bolted mid shelf can be excluded during construction for storage of 18kg forklift gas bottles
- Sheet metal shelves allow easy sliding of cylinders to the back of the cage
- Sheet metal roof provides weather protection
- Zinc finish for long life corrosion protection
- Load Limit: 500kg
- Overall Dimensions (LxWxH): 2040x760x1285mm
- Internal Dimensions (LxWxH): 1960x670x1100mm
- Distance between Shelves: 540mm
- Unit Weight: 200kg



Code	WAS	NOW
M7555	\$2,340	\$2,105

Collapsible & Stackable Stillage Cage (rectangular)

- Pallet Racking Compatible
- Load Capacity: 500kg
- 3 Sided Half Drop Down Gate
- 1 Sided Swing Gate (Short Side)
- Quick Collapsible sides
- Stackable 3 x high loaded, 4 x high empty & 6 x high collapsed
- Fork Pocket Size: 132x85mm
- Fork Pocket Centre: 250mm
- Overall Dimensions (LxWxH): 1150x750x1170mm
- Internal Dimensions (LxWxH): 1090x680x925mm
- Zinc Finish
- Unit Weight: 74kg



Code	WAS	NOW
M7561	\$785	\$706

Site Tool Cabinet – Single Door

- Heavy duty construction
- Fitted with crane lugs & fork pockets
- 2 adjustable shelves allowing flexible storage options
- Dual locking mechanism door
- Complies with Australian Standards
- Wheels fitted (removable)
- Powder coated finish
- Working Load Limit: 1000kg
- Load Centre: 350mm
- HCG: 376mm
- Opening (WxH): 1055x1055mm
- Overall Size (WxDxH): 1155x700x1450mm
- Fork Pocket Size: 166x67mm
- Fork Pocket Centres: 660mm
- Unit Weight: 180kg



Code	WAS	NOW
M7570	\$1,970	\$1,770

Galvanised 1 Drum Spill Bin

- Suits 1 x 205L drum
- Close spacing support bars allows direct placement of large or small drums
- Fitted with a drain plug to empty the containment area
- Elevated base allows transport by forklift or hand pallet jack
- Steel fabricated, non-flammable unit
- Provides a spill capacity exceeding Australian Standards for 'portable' units
- Long life galvanised finish
- Load Capacity: 2000kg
- Spill Capacity: 240L
- Overall Dimensions (WxDxH): 810x760x490mm
- Unit Weight: 55kg



Code	WAS	NOW
M7580	\$500	\$450

Galvanised 2 Drum Spill Bin

- Suits 2 x 205L drums
- Close spacing support bars
- Fitted with a drain plug to empty the containment area
- Elevated base allows transport by forklift or hand pallet jack
- Steel fabricated, non-flammable unit
- Provides a spill capacity exceeding Australian Standards for 'portable' units
- Long life galvanised finish
- Load Capacity: 2000kg
- Spill Capacity: 250L
- Overall Size (LxWxH): 1210x610x440mm
- Unit Weight: 60kg



Code	WAS	NOW
M7581	\$560	\$505

Galvanised 4 Drum Spill Bin

- Suits 4 x 205L drums
- Steel fabricated, non-flammable unit
- Optional Nylon Storage Cage Cover available on request*
- Close spacing support bars
- Timber pallets may be fitted within the raised skirt if required
- Fitted with a drain plug
- Elevated base for easy transport
- Load Capacity: 2000kg
- Spill Capacity: 245L
- Fork Pocket Size: 245x80mm/180x80mm
- Fork Pocket Centres: 450mm/910mm
- Overall Size (WxDxH): 1210x1210x265mm
- Long life galvanised finish
- Unit Weight: 70kg



Code	WAS	NOW
M7582	\$730	\$657

Galvanised Drum Trolley with Bund

- A versatile & robust solution for safely transporting spill drums while providing spill containment, making it ideal for use in industrial settings where hazardous liquids are handled
- Designed to carry 1 drum which is mounted on the rack provided for easy dispensing
- The bin tray has a drain plug for draining the bin
- Galvanised finish
- Spill Bin Capacity: 230L
- Dimensions: (WxDxH) 610x1210x431mm
- Unit Weight: 50kg



Code	WAS	NOW
M7583	\$690	\$620

Spring Loaded Tilting Stands for IBC's

- The hinged platform slowly raises to a 10° angle as the weight decreases
- Sits on a base with bolt on fork pockets which can be removed if required
- Easy to move with a forklift
- Simple & easy-to-use
- Capacity: 2000kg
- Fork Pocket Centres: 730mm
- Fork Pocket Size: 190x90mm
- Platform Size: 1200x1130mm
- Load Centre: 600mm
- Zinc Plated Finish
- Overall Size: (LxWxH) 1130x1200x360mm
- Unit Weight: 105kg



M7680 pictured with IBC



Code	WAS	NOW
M7680	\$1,110	\$998

Gas Cylinder Cage

- Designed to safely store & transport gas cylinders by forklift or overhead crane
- 4 crane lifting lugs at top & 2 forklift pockets underneath for easy transport
- Ideal for use on building sites & mines
- Load binder allows cylinders to be securely fastened in position
- Folding ramp for easy access, reducing unsafe lifting of cylinders by personnel
- Stacks 2 x high when fully loaded
- Crane Working Load Limit: 500kg
- Forklift Working Load Limit: 1000kg
- Fork Pocket Size: 192x92mm
- Fork Pocket Centres: 600mm
- Overall Size: (WxDxH) 1200x850x1065mm
- Internal Size: 1050x700mm
- Zinc finish
- Unit Weight: 120kg



Code	WAS	NOW
M7602	\$1,340	\$1,205

Fork Gas Storage Cage - 6 cylinders

- Heavy duty steel construction storage cages specifically designed for storage of LPG cylinders used on forklifts
- Powdercoated green
- Cylinder chain restraint
- Features padlockable doors
- Designed to comply with relevant Australian Standards
- LPG Gas Cylinder Capacity: 6
- Door Opening Size: 1000x810mm
- Internal Size (LxWxH): 1040x680x820mm
- External Size (LxWxH): 1080x730x990mm
- Unit Weight: 60kg



Code	WAS	NOW
M7622	\$1,904	\$1,712

Fork Gas Storage Cage - 12 cylinders

- Heavy duty steel construction storage cages specifically designed for storage of LPG cylinders used on forklifts
- Powdercoated green
- Cylinder chain restraint
- Features padlockable doors
- Designed to comply with relevant Australian Standards
- Distance between shelves: 880mm
- LPG Cylinder Capacity: 12
- Door Opening Size: 1000x1760mm
- Internal Size (LxWxH): 1040x680x1760mm
- External Size (LxWxH): 1080x730x1940mm
- Unit Weight: 108kg



Code	WAS	NOW
M7623	\$2,265	\$2,038

Flammable Liquid Cabinet - 100L capacity

- Zinc coated steel sheeting construction with powdercoat finish
- Stainless steel continuous pin hinging
- Safety signage & directions included
- Adjustable slow release hydraulic door control closure systems
- Made to AS 1940-2004
- Door Opening Size: 835x555mm
- Internal Size (LxWxH): 835x525x555mm
- Overall Size (LxWxH): 920x615x800mm
- Storage Capacity: 100L
- 4L Drum Capacity: 24
- 20L Drum Capacity: 3
- No. of Shelves: 1
- Unit Weight: 76kg



Code	WAS	NOW
M7652	\$1,490	\$1,340

Aerosol Cage - 432 can capacity

- Heavy duty steel construction storage cages designed specifically for aerosol cans
- Powdercoated green
- Feature lockable doors & bolt down plates for added security
- Complies with relevant Australian Standards
- Storage Capacity: 432 cans
- Door Opening Size: 1575x1720mm
- Distance Between Shelves: 325mm
- Internal Size (LxWxH): 1650x365x1750mm
- External Size (LxWxH): 1655x400x1800mm
- Unit Weight: 152kg



Code	WAS	NOW
M7665	\$2,465	\$2,215

Stainless Steel Benches

- Ideal for hospitality, pharmaceutical & medical workplaces
- 1.2mm thick 304 grade stainless steel top & undershelf
- 304 grade stainless steel legs
- Easy to wipe clean & keep hygienic
- Load Rating:
Bench Top: 200kg
Undershelf: 100kg
- Six widths available online* ranging from: 900-2400mm
- Bench Depth: 600mm
- Bench Height: 900mm



M8200



M8201



M8203



M8205

Code	Details	Overall Dimensions (WxDxH)	Unit Weight	WAS	NOW
M8200	Stainless Steel Bench - 900mm	900x600x900mm	20kg	\$826	\$743
M8201	Stainless Steel Bench - 1200mm	1200x600x900mm	24.5kg	\$976	\$877
M8203	Stainless Steel Bench - 1800mm	1800x600x900mm	33.4kg	\$1,276	\$1,148
M8205	Stainless Steel Bench - 2400mm	2400x600x900mm	45.5kg	\$1,652	\$1,485

Stainless Steel Benches (with splashback)

- Ideal for hospitality, pharmaceutical & medical workplaces
- 1.2mm thick 304 grade stainless steel top & undershelf
- 304 grade stainless steel legs
- 100mm splashback to stop items falling down back of bench
- Easy to wipe clean & keep hygienic
- Load Rating:
Bench Top: 200kg
Undershelf: 100kg
- Seven widths available online* ranging from: 600-2400mm
- Bench Height with Splashback: 1000mm



M8220



M8221



M8222



M8224



M8226

Code	Details	Overall Size (WxDxH)	Unit Weight	WAS	NOW
M8220	Stainless Steel Bench with Splashback - 600mm	600x600x900mm	15.6kg	\$714	\$642
M8221	Stainless Steel Bench with Splashback - 900mm	900x600x900mm	20.2kg	\$864	\$777
M8222	Stainless Steel Bench with Splashback - 1200mm	1200x600x900mm	24.7kg	\$1,014	\$912
M8224	Stainless Steel Bench with Splashback - 1800mm	1800x600x900mm	33.7kg	\$1,314	\$1,182
M8226	Stainless Steel Bench with Splashback - 2400mm	2400x600x900mm	47.5kg	\$1,690	\$1,520

Pallet Racking Protection

- Pallet Racking Column Guards & End Protectors are a highly effective solution for preventing damage to racking & inventory by forklifts
- M7400
- Powder coated steel
- Conforms to AS4084:2012
- Overall Size: (HxD) 400x220mm
- Unit Weight: 5kg
- M7406
- Orange Powder coated steel
- Double Bay End Protector to suit: 838mm frame + 430mm space + 838mm frame
- Conforms to AS4084:2012
- Height: 400mm
- Unit Weight: 27kg



Code	Details	WAS	NOW
M7400	Pallet Racking Column Guard	\$67.20	\$60
M7406	End Protectors (suits double bay of racking)	\$364	\$325

Fixed Safety Bollards

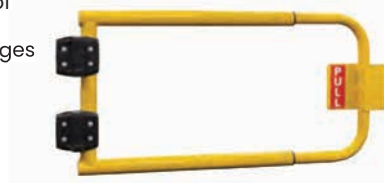
- Ideal for protecting expensive equipment & racking from possible forklift damage
- Powdercoated yellow finish
- Other sizes are available online*
- Bolt Hole Size: 22mm
- Base Plate Size: 203x203x10mm
- Bollard Diameter: 115mm
- M16 Tru Bolts available to suit
- Wall thickness: 3mm
- Overall Dimensions: (HxWxD)
- M7420: 1068x1220x115mm
- M7421: 230x1220x115mm
- Unit Weight:
- M7420: 29.5kg
- M7421: 16kg



Code	Details	WAS	NOW
M7420	'U' Bar High Bollard	\$379	\$340
M7421	'U' Bar Low Bollard	\$210	\$189

Adjustable Safety Swing Gate

- Self closing gate is designed to restrict access to areas of potential hazard
- Heavy duty Self-closing hinges
- Powder Coat Finish
- Colour: Yellow
- Gate swings inward
- Built-in gate stopclosing hinges
- Fits left & right hand openings, inwards opening
- Adjustable to suit 780-1330mm openings
- Overall Length: 890-1440mm
- Overall Size (WxD): 440x50mm
- Unit Weight: 11kg



Code	WAS	NOW
M7476K	\$395	\$355

7.1 Metre Expanding Barrier

- A robust solution designed to control access & manage spaces effectively
- Made from powdercoated steel & aluminium
- Colour: Black
- 75mm Rubber Castors: 8 x swivel with brakes
- Base Width: 460mm
- Collapsed Size: 560x2050mm
- Expanded Size: (LxH) 7100x1930mm
- Tube Size: 20x20mm
- Post Size: 40x40mm
- Unit Weight: 36kg



Code	WAS	NOW
M7415	\$1,125	\$1,010

Single 2 Metre Belt Post Barriers

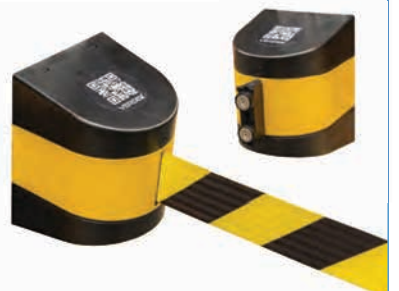
- Used as a portable crowd control & for other settings to manage & guide the flow of people
- M7413: Retractable 2m belt with post Features a black coloured belt & a cast iron black base with a steel cover. The post also has built in rubber floor protectors Height: 1000mm
- M7414: Retractable 2m belt with post Features black & yellow coloured belt with a yellow powdercoated finish post & rubber base Height: 1000mm



Code	Details	Unit Weight	WAS	NOW
M7413	Single 2m Belt Post Barrier	9.3kg	\$89	\$80
M7414	Outdoor Single 2m Belt Post Barrier	9.5kg	\$76	\$68

Wall Mount Barrier with 5 metre belt

- Retractable Barriers which are magnetic & can be wall mounted
- Easy setup with the included hardware kit
- Black & yellow diagonal striped Retractable Tape Barrier
- This unit offers flexibility as it includes all combinations of fixings & mounts
- The unit can be mounted to the wall by Magnetic, Adhesion or screws Black & yellow diagonal stripes for hazard alert
- Length: 5000mm
- Unit Weight: 0.6kg



Code	WAS	NOW
M7417	\$84	\$75

Half Height Stationery Cabinet

- Features a durable, powder coated finish suitable for any workplace environment
- Shelves are fully adjustable to maximise your workplace storage with a lock for extra security
- Supplied fully assembled
- All cupboards are key lockable
- 1/2 height cabinet comes standard with 1 shelf (extra shelves available)
- Overall Size: (LxWxH): 1015x910x450mm
- Shelf Thickness: 25mm
- Shelf Capacity: 40kg
- Unit Weight: 28kg
- Extra Shelves supplied with clips



Code	Details	WAS	NOW
M7070	Half Height Stationery Cabinet	\$342	\$305
M7072	Extra Shelf to suit Cabinet	\$54	\$48

Industrial Workbench - 900mm

- A reliable & practical solution for industrial workspaces, combining strength, durability & functionality
- This workbench has a 600kg top bench capacity
- 28mm thick laminated top
- Comes standard with adjustable feet for leveling on uneven floors
 - castor kit available
- Powdercoated light grey finish
- Overall Size (LxWxH): 900x750x900mm
- Unit Weight: 35kg



Code	WAS	NOW
M7300	\$365	\$325

10 Drawer Industrial Tooling Cabinet

- Sliding drawers are a welded strengthened single rail design coupled with high quality mechanical bearings for long lasting smooth operation
- Single key lock design promoting safer storage
- Mechanical safety feature prevents unit from tipping
- All drawers come with adjustable steel dividers
- Centre dividers are removable
- Drawer 1-9: 100mm high
- Drawer 10: 200mm high
- 10 Dividers per Drawer
- Individual Drawer Capacity: 100kg
- Overall Size (WxDxH): 881x653x1200mm
- Unit Weight: 175kg



Code	WAS	NOW
M7221	\$1,988	\$1,788

Lockable Drawer Unit (6 drawer)

- 6 Drawer Unit is ideal for industrial applications & workshops
- Sliding drawers are a welded strengthened single rail design coupled with high quality mechanical bearings for long lasting smooth operation
- 2 x 75mm Drawers
- 2 x 100mm Drawers
- 2 x 150mm Drawers
- Each drawer is rated at 100kg load capacity with 97% drawer access
- Mechanical safety feature prevents unit from tipping
- Overall Size (WxDxH): 565x580x750mm
- Unit Weight: 85kg



Code	WAS	NOW
M7245	\$965	\$868

Louvre Panel Trolley

- Strong metal panel trolleys which are ideal for storing either Stor-Pak Bins or tools on hooks
- Load Capacity: 150kg
- Powder coated light grey metal construction
- Fitted with 4 swivel castors (2 with brakes)
- Wheels can be removed to make fixed shelving if required
- Overall Size (LxWxH): 1040x980x1540mm
- Unit Weight: 60kg



Code	WAS	NOW
M7260	\$675	\$605

5 Tier Shelving Unit with adjustable feet

- A practical & versatile storage solution that offers high capacity, stability & ease of use
- This unit is used for displaying & storing food products & can also be used in warehouses, retail stores, offices etc.
- Includes 5 x shelves
- Adjustable feet
- Overall capacity: 400kg
- Shelf capacity: 120kg
- Tray size (LxW): 915x520mm
- Overall size (LxWxH): 920x520x1800mm
- Distance between shelves: 355mm
- Unit weight: 24kg



Code	WAS	NOW
M7090	\$685	\$615

NEW PRODUCT ALERT

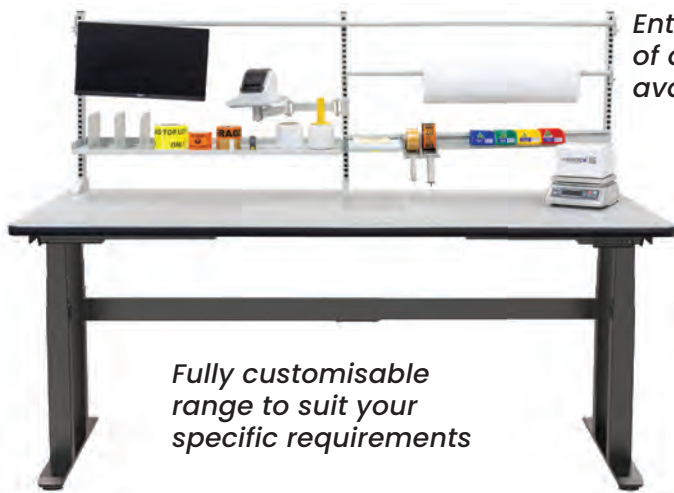


Available in Classic Black finish



Electric height adjustment feature to promote ergonomic workspaces

Electric Height Adjustable Industrial Workbenches



Fully customisable range to suit your specific requirements

Entire range of accessories available online



For more information please visit: mhaproducts.com.au/height_adjustable_workbenches

Full Height Industrial Storage Cabinet

- Made from reinforced sheet metal, this unit is great for storing tools & many other items in the workplace
- Doors open to 180°
- Finish: Powdercoated light grey with light blue coloured doors
- Cabinet comes standard with 4 adjustable shelves
- Drawers come with 5 compartments & 10 dividers (4 Removable partitions)
- 3 point key lock system
- Drawer Capacity: 75kg
- Shelf Capacity: 150kg
- Cabinet Total Load Capacity: 600kg



M7201



M7201 & M7205*

Code	Details	Overall Dimensions	Unit Weight	WAS	NOW
M7201	Full Height Cabinet	1800x900x450mm	90kg	\$785	\$705
M7203	Large Drawer Unit - 100mm	777x330x100mm	14.1kg	\$208	\$187
M7205	Cabinet Base Stand	900x450mm	4kg	\$135	\$120



M7203



M7205

2025 Easter Special's

ON SALE UNTIL APRIL 30TH 2025



Palomat Greenline
Pallet Dispenser

NOW
\$26,550
SAVE \$2,950



V7745

Bulk Bag
Filling Frame

NOW
\$2,196
SAVE \$244



V6220

Galvanised Bollard

NOW
\$170
SAVE \$21



V7425

Flammable Liquid
Cabinet -250L

NOW
\$1,835
SAVE \$180



V7610

Vented
Collapsible Bin

NOW
\$445
SAVE \$50



V7811

Site Tool Cabinet
- Double Door

NOW
\$2,490
SAVE \$300



V7571



☎ 1800 750 900
➤ www.mhaproducts.com.au

For all enquiries: sales@mhaproducts.com.au

Sydney (02) 8865 1800
Brisbane (07) 3558 9700
Melbourne (03) 9115 9100
Adelaide (08) 8166 5151

© MHA Products
Specials end 30th April 2025

